



# GMT MONTHLY MEMBERSHIP PROGRESS REPORT

Results as of: 5/31/2020

Multiple District 39

LOCATION: IDAHO

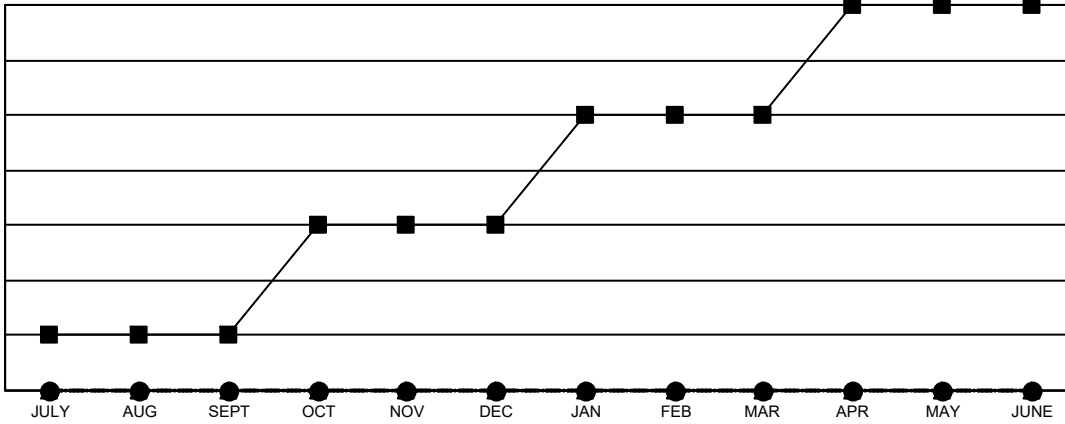
GMT: OPEN

GMT CA 1

| Clubs                 |               |           |               |
|-----------------------|---------------|-----------|---------------|
| RESULTS FOR 2019-2020 |               |           |               |
| QUARTER               | NEW CLUB GOAL | NEW CLUBS | DROPPED CLUBS |
| JULY/AUG/SEPT         | 1             | 0         | 0             |
| OCT/NOV/DEC           | 2             | 0         | 3             |
| JAN/FEB/MAR           | 2             | 0         | 1             |
| APR/MAY/JUNE          | 2             | 0         | 0             |

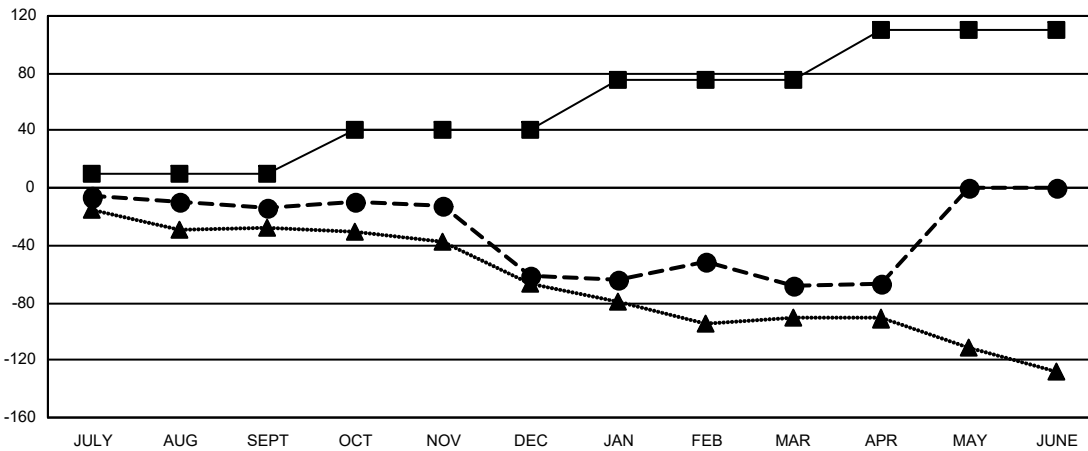
| Members               |                        |                      |  |
|-----------------------|------------------------|----------------------|--|
| RESULTS FOR 2019-2020 |                        |                      |  |
| QUARTER               | MEMBER GROWTH NET GOAL | MEMBER GROWTH ACTUAL | DROPPED MEMBERS ACTUAL (including transfers) |
| JULY/AUG/SEPT         | 10                     | 34                   | 45   |
| OCT/NOV/DEC           | 30                     | 17                   | 63   |
| JAN/FEB/MAR           | 35                     | 46                   | 43   |
| APR/MAY/JUNE          | 35                     | 14                   | 3  |

**GOALS AND ACTUAL NEW CLUBS CUMULATIVE**



- - CURRENT YEAR GOALS FOR NEW CLUBS
- - CURRENT YEAR ACTUAL NEW CLUBS
- ▲ - LAST YEAR ACTUAL NEW CLUBS

**GOALS AND ACTUAL MEMBERS CUMULATIVE**



- - MEMBER GROWTH NET GOAL
- - MEMBER GROWTH ACTUAL
- ▲ - LAST YEAR MEMBERSHIP ACTUAL

|                                     |   |  |
|-------------------------------------|---|--|
| DROPPED CLUBS: 4                    | 27 CLUBS OF 61 ADDED 1 OR MORE NEW MEMBERS                | <b>GENDER DISTRIBUTION</b>               |
| <b>DROPPED MEMBERS</b>              |   | MALE            823 (62.07%)             |
| DECEASED            14              |   | FEMALE         503 (37.93%)              |
| CLUB CANCELLED     15               | <a href="#">CLICK HERE FOR CUMULATIVE MEMBERSHIP DATA</a> | TOTAL FAMILY UNIT MEMBERS            345 |
| OTHER                 125           |   | FAMILY MEMBERS PAYING HALF DUES     178  |
| <b>TOTAL                    154</b> |   |  |